

3.3.140 Telefon mit 2 Sprechrohren Version 2020

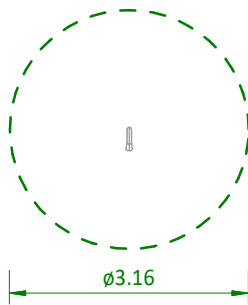
Montage M 1:100, 1:25 (m)

05.04.2022

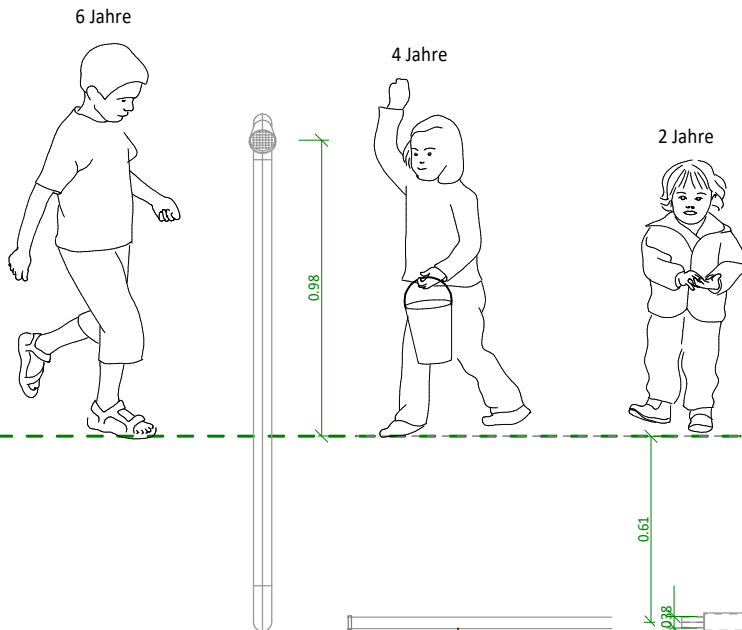
max. Fallhöhe: -|-

Gewicht: 12 kg

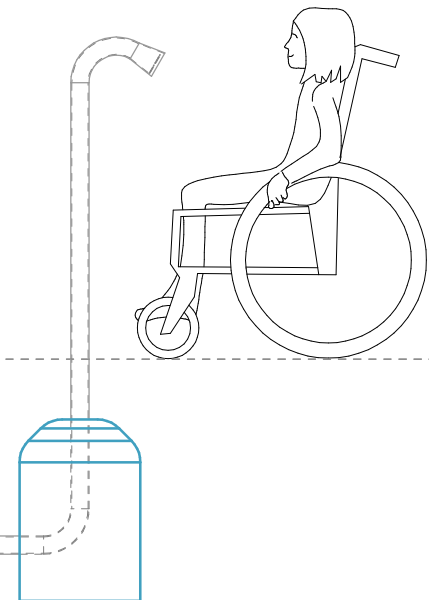
Draufsicht



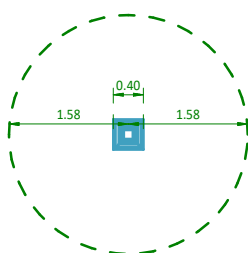
Ansicht M 1:25 (m)



Seitenansicht M 1:25 (m)



Fundament



Pfosten d = 15 cm

